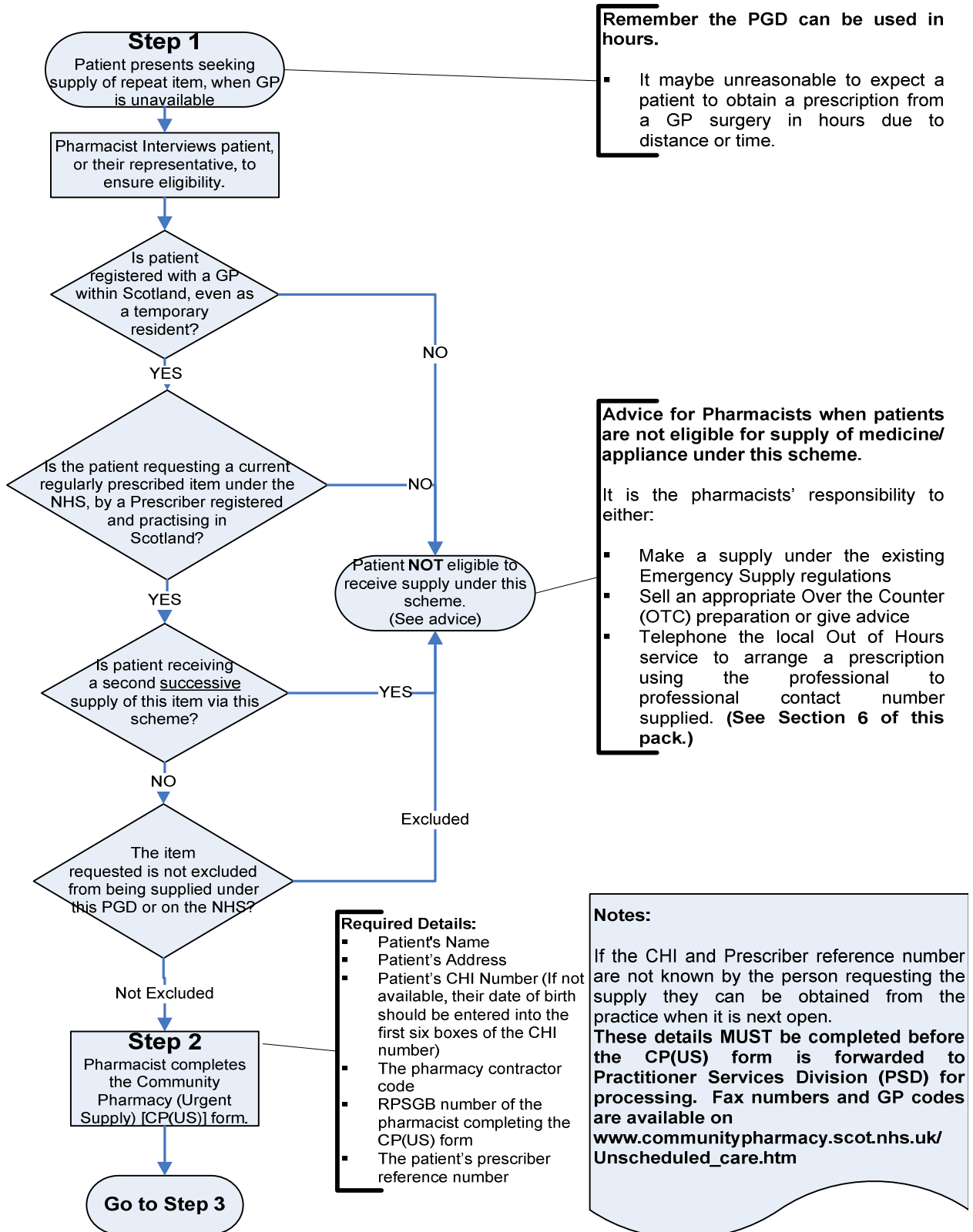


**STEP BY STEP GUIDE TO THE NATIONAL PGD FOR SUPPLY OF REPEAT MEDICINES, APPLIANCES AND ACBS PRODUCTS**



**Remember the PGD can be used in hours.**

- It maybe unreasonable to expect a patient to obtain a prescription from a GP surgery in hours due to distance or time.

**Advice for Pharmacists when patients are not eligible for supply of medicine/appliance under this scheme.**

It is the pharmacists' responsibility to either:

- Make a supply under the existing Emergency Supply regulations
- Sell an appropriate Over the Counter (OTC) preparation or give advice
- Telephone the local Out of Hours service to arrange a prescription using the professional contact number supplied. (See Section 6 of this pack.)

- Required Details:**
- Patient's Name
  - Patient's Address
  - Patient's CHI Number (If not available, their date of birth should be entered into the first six boxes of the CHI number)
  - The pharmacy contractor code
  - RPSGB number of the pharmacist completing the CP(US) form
  - The patient's prescriber reference number

**Notes:**

If the CHI and Prescriber reference number are not known by the person requesting the supply they can be obtained from the practice when it is next open. **These details MUST be completed before the CP(US) form is forwarded to Practitioner Services Division (PSD) for processing. Fax numbers and GP codes are available on [www.communitypharmacy.scot.nhs.uk/Unscheduled\\_care.htm](http://www.communitypharmacy.scot.nhs.uk/Unscheduled_care.htm)**

