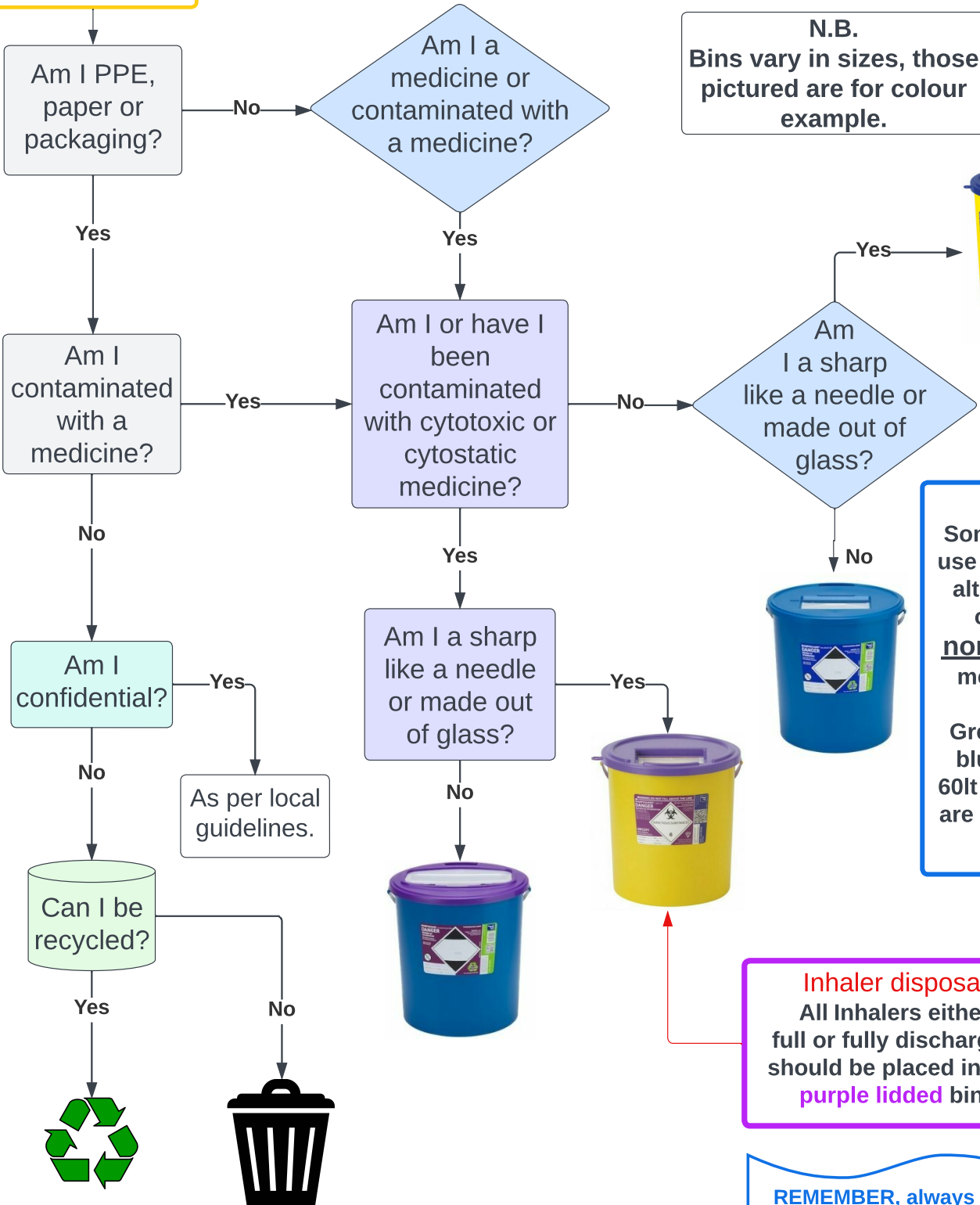


Pharmacy waste segregation

What am I?



N.B.
Bins vary in sizes, those pictured are for colour example.



N.B.
Some boards use cardboard alternatives only for non-sharps medicines.
Grey bodied blue lidded 60lt WIVA bins are also being used.

Inhaler disposal
All Inhalers either full or fully discharged should be placed into a purple lidded bin.

REMEMBER, always use gelling agents if there may be liquid present.

N.B.
New recycled plastic is being introduced for some bin bases and is coloured grey. Label & lid colour of a bin should always match.