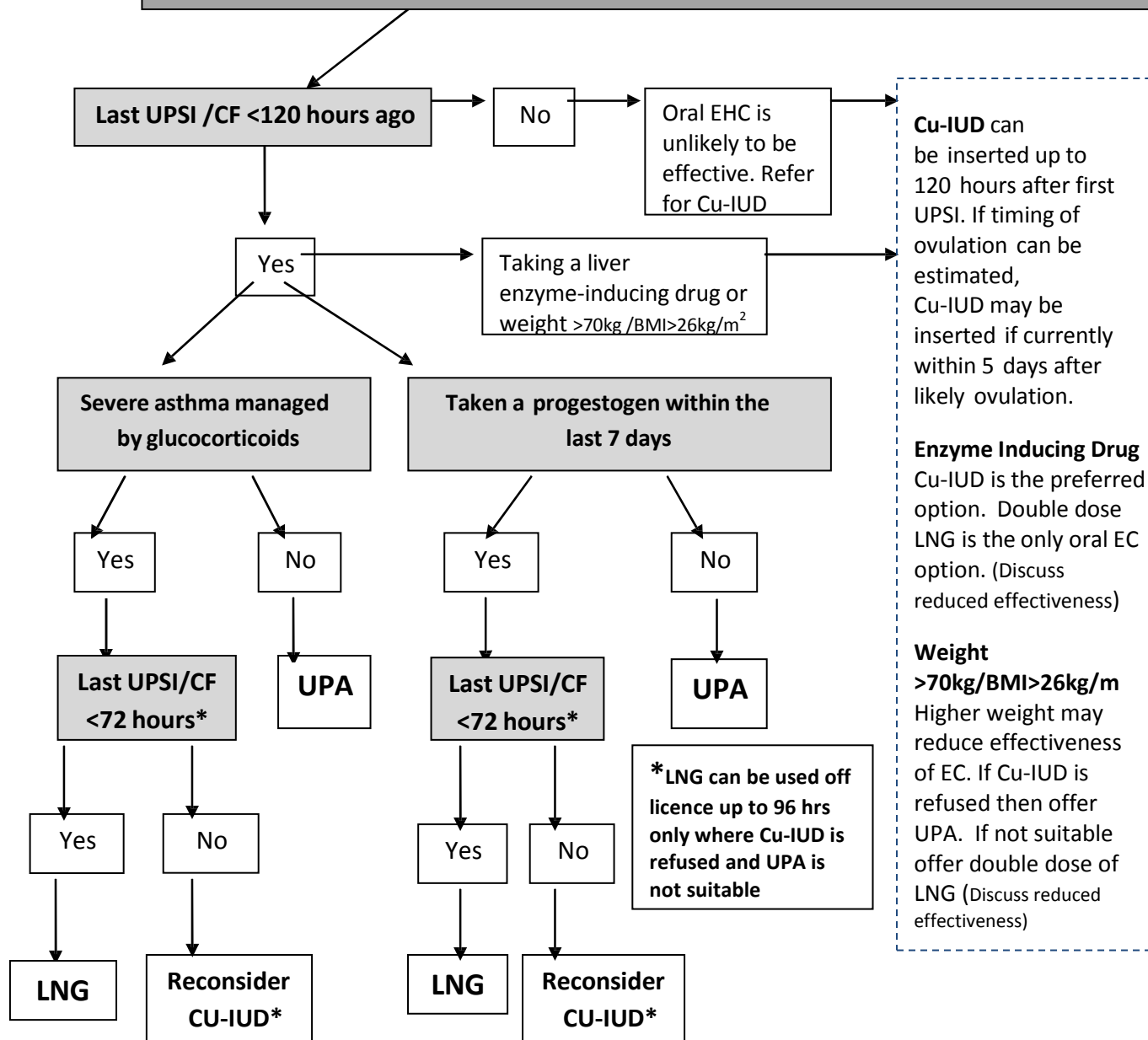


**Guidance on Emergency Contraception  
For NHS Dumfries and Galloway Community Pharmacists**

Refer to the Emergency Contraceptive Guidance for full details for exclusions, cautions in use, warnings and additional information

Offer emergency contraception on any day of a natural menstrual cycle

The Cu-IUD is the most effective method of EC  
Supply oral EHC even if referred for Cu-IUD



Note that oral EHC is unlikely to be effective if taken after ovulation

Cu-IUD	copper intrauterine device	EC	emergency contraception
EHC	emergency hormonal contraception	UPA	ulipristal acetate 30mg
LNG	levonorgestrel 1.5mg	UPSI	unprotected sexual intercourse
CF	contraceptive failure		