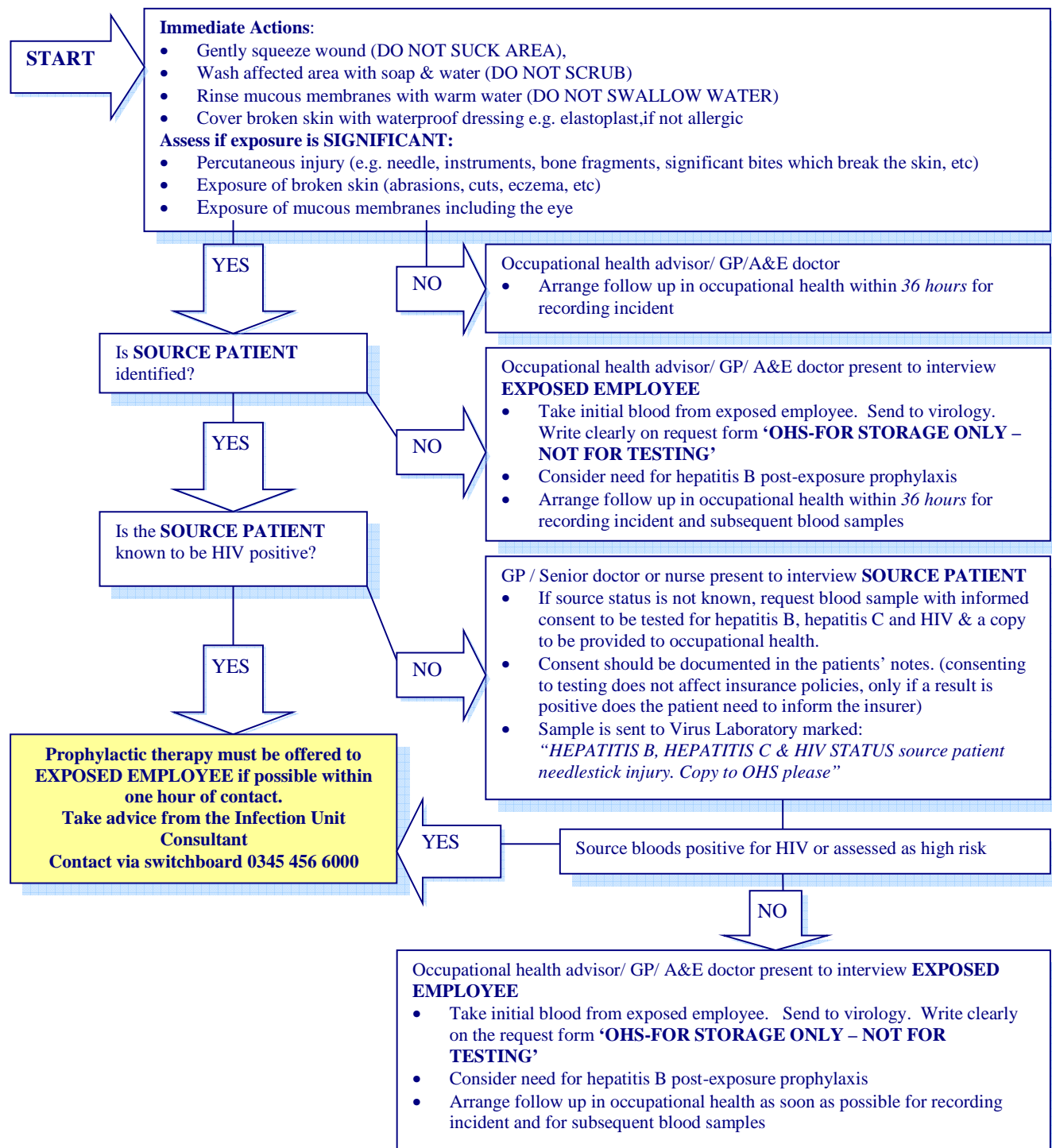




OCCUPATIONAL HEALTH SERVICE

MANAGEMENT OF OCCUPATIONAL EXPOSURE TO BLOOD-BORNE VIRUSES



Advice and support can be obtained from:

NHS Grampian Occupational Health Service, Foresterhill Lea- Tel: (01224) 553663; Moray Tel: (01343) 567386; or Orkney (01856) 888059
Consultant in Virology on Tel: (01224) 553818 / 0345 456 6000

Consultants in the Infection Unit through the main NHS Grampian Switchboard on Tel: 0345 456 6000

Consultant in Public Health Medicine on Tel: 01224 558520

Post exposure prophylaxis packs are located at: -

A & E should **only** be involved where there is a significant injury occurring out of hours or an exposed employee can not be seen in occupational health within 36 hours

- | | |
|-------------------------------------|--|
| • The Infection Unit, ARI | • Sexual Health Clinic, Health Village, Frederick Street, Aberdeen |
| • Aboyne Health Centre | • A & E, Dr Gray's, Elgin |
| • Jubilee Hospital, Huntly | • Casualty, Peterhead |
| • Casualty, Chalmers Hospital Banff | • Th/OPD, Orkney |
| • Casualty, Gilbert Bain, Shetland | |