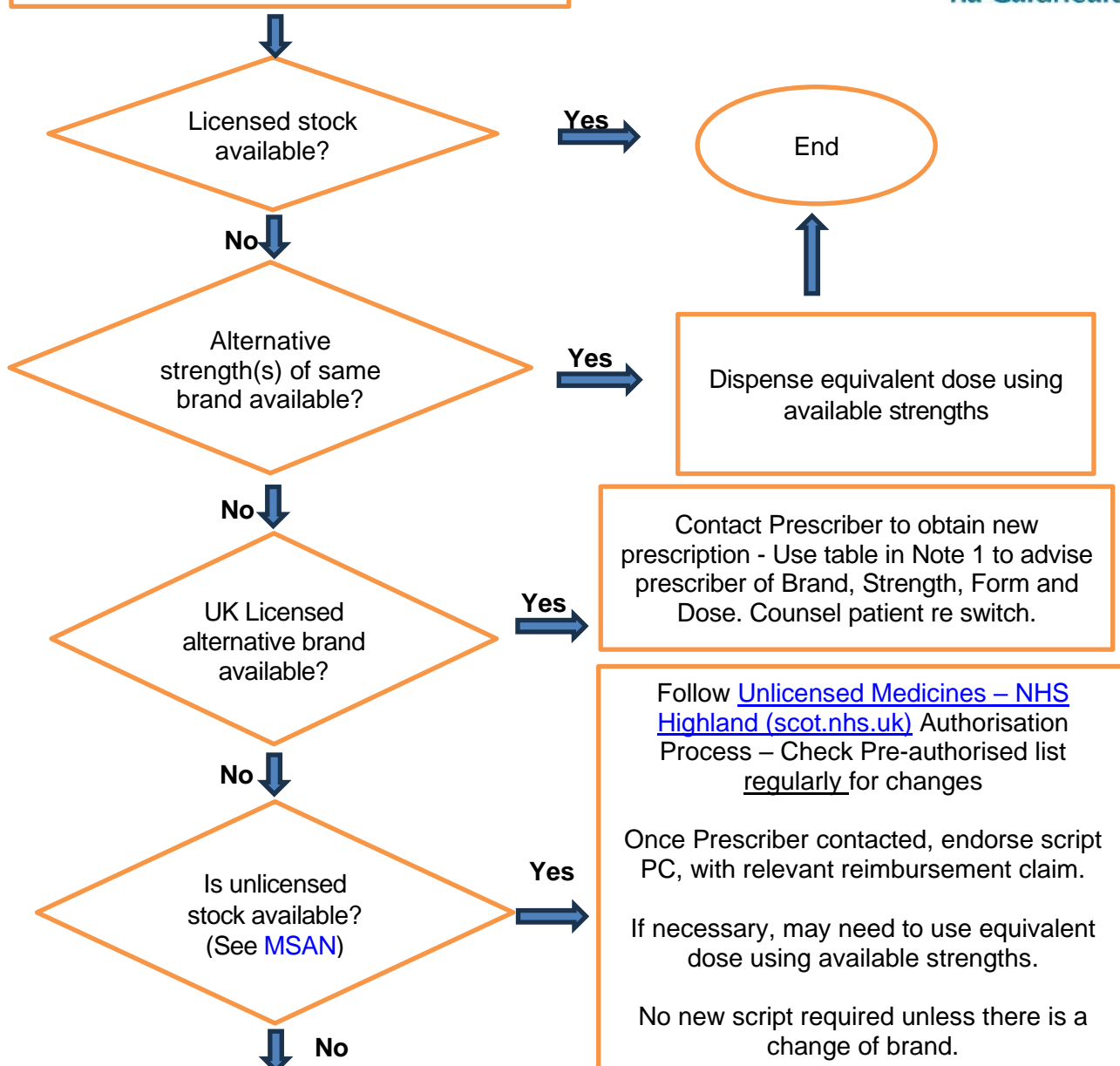


Prescription for Pancreatic Replacement Therapy presented to Community Pharmacy.



Access stock from Raigmore hospital by:

- Contact the GP practice to provide a prescription for 28 days supply for dispensing at Raigmore Pharmacy.
- Prescription to be emailed to Raigmore Pharmacy Dispensary nhshighland.dispensary@nhs.scot by the practice requesting the supply along with the indication for its use. If it is a subsequent supply then state this and no indication will be required. The original must then be posted to Raigmore Pharmacy Dept, Raigmore Hospital, Old Perth Road, Inverness, IV2 3UJ. There is no need to phone the Dispensary. If supply cannot be made, then Dispensary staff will contact the GP practice and patient to let them know.
- Dispensary will add a small note when the last/ full supply on the prescription is made.

In the meantime the Community Pharmacy should continue to try to order stock for the original prescription.

If supply unavailable

Refer back to prescriber –
Prescriber to contact Specialist team

Support for patients

Patients with cystic fibrosis will be under the care of a specialist centre, and they should contact their specialist team if they have any concerns.

Local contact details: Cystic Fibrosis Nurse – Lesley Blaikie -07801 306098 lesley.blaikie2@nhs.scot

Paediatric CF Dietician – April Sutherland – 01463 705097 paediatricdieticians@highland.gov.uk

Useful sources of patient information

Pancreatic Cancer UK

[How to deal with Creon, Nutrizym or Pancrex supply issues - Pancreatic Cancer UK](#)

Guts UK

<https://gutscharity.org.uk/2024/04/pert-supply-problems/>

Cystic Fibrosis Trust

[Creon supply update \(cysticfibrosis.org.uk\)](#)

Note 1- Switching advice, depending on what stock is available.

Further information, including a position statement with further information on dose equivalence for UK licensed products (from which this table is taken) can be found in the [MSAN](#).

Table 1: Conversion charts (2)

Creon® 25,000 Dose	Equivalent in Nutrizym® 22	Equivalent in Creon® 10,000	Equivalent in Pancrex® 340mg (8,000 units lipase)	Equivalent in Pancrex® 125mg (2,950 units lipase)	Equivalent in Creon® Micro*	Pancrex® V powder*
1 x Creon 25,000	1 x Nutrizym 22	3 x Creon 10,000	3 x Pancrex 8,000	8 x Pancrex 2,950	5 scoops Creon Micro	½ x 2.5ml spoon
2 x Creon 25,000	2 x Nutrizym 22	5 x Creon 10,000	6 x Pancrex 8,000	16 x Pancrex 2,950	10 scoops Creon Micro	1 x 2.5ml spoon
3 x Creon 25,000	3 x Nutrizym 22	8 x Creon 10,000	9 x Pancrex 8,000	24 x Pancrex 2,950	15 scoops Creon Micro	1½ x 2.5ml spoon
4 x Creon 25,000	4 x Nutrizym 22	10 x Creon 10,000	12 x Pancrex 8,000	32 x Pancrex 2,950	20 scoops Creon Micro	2 x 2.5ml spoon
5 x Creon 25,000	5 x Nutrizym 22	13 x Creon 10,000	15 x Pancrex 8,000	40 x Pancrex 2,950	25 scoops Creon Micro	2 ½ x 2.5ml spoon
6 x Creon 25,000	6 x Nutrizym 22	15 x Creon 10,000	18 x Pancrex 8,000	48 x Pancrex 2,950	30 scoops Creon Micro	3 x 2.5ml spoon

**Mix with a mildly acidic puree (fruit yoghurt / apple sauce), rinse mouth with water and ensure thorough mouth care as at risk of ulceration if powder / granules get stuck in the gums / under dentures*

Cautions when changing dose or preparation of PERT in patients taking:

- insulin or glucose lowering oral drugs, need close monitoring of blood glucose
- anticoagulation, especially warfarin, need closer monitoring.
- immunosuppressive medications, may need doses adjusted
- any oral medicines - there may be changes in absorption if GI symptoms occur
- Using loperamide or other bowel slowing agents– NOT for CF patients
- Infective, inflammatory and obstructive causes of loose stools or faecal urgency should be ruled out prior to prescribing loperamide.
- Consider vitamin supplementation in patients with malabsorption symptoms for a prolonged period